

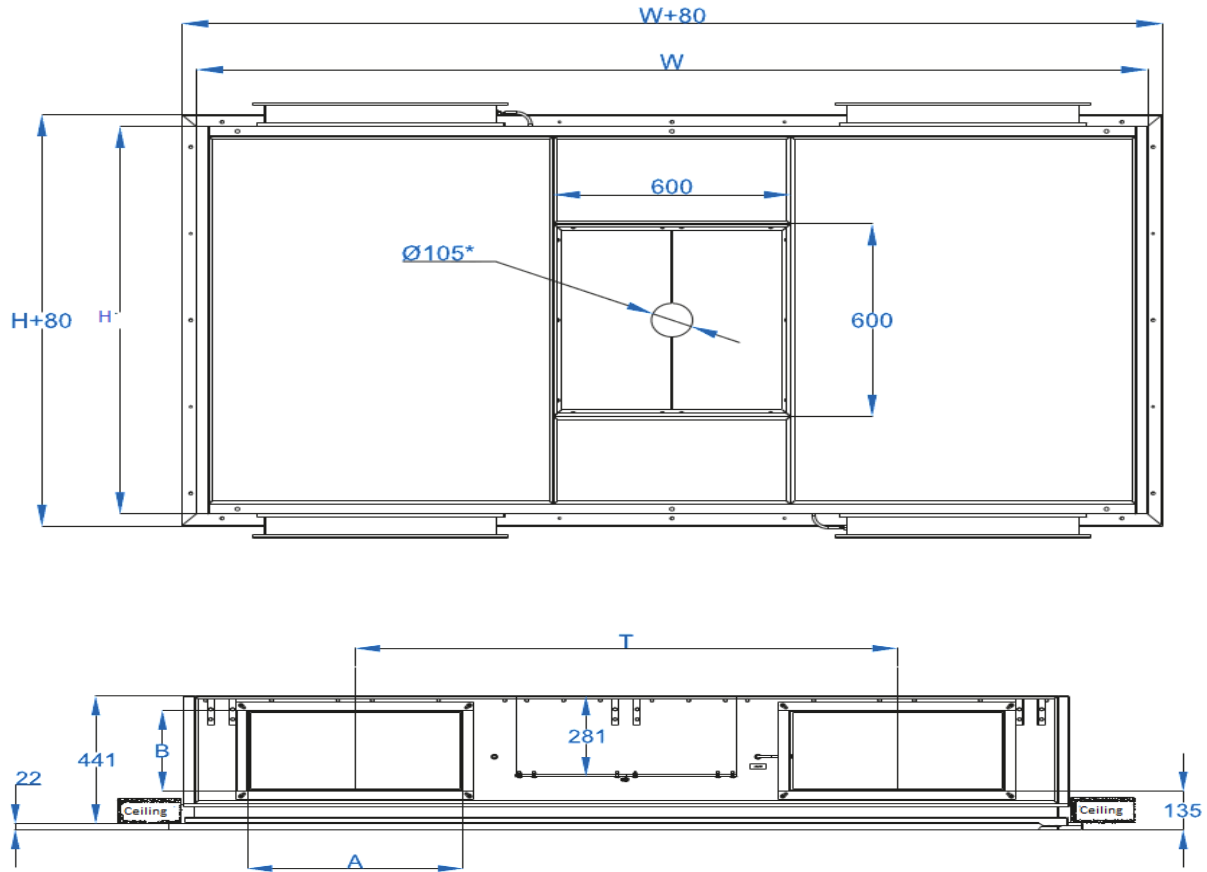
Project:  
 Tag:  
 Engineer:  
 Contractor:  
 Date:



**LAMINAR FLOW UNITS IN OPERATING THEATRES**  
**Stainless Steel**

**Submittal: GLF**  
**Standard Units**

Model: **GLF**



Item	W(mm)	H(mm)	L(mm)	Filter Width (mm)	Filter Height (mm)	Axis Filter T (mm)	Filter Unit	Duct Width A (mm)	Duct Height B (mm)	Lighting 2x18W IP65
1	2400	1200	450	610	305	1474	2	586	281	2x3600 Lumen
2	2400	1400	450	610	305	1474	2	586	281	2x3600 Lumen
3	2400	1600	450	610	305	1474	4	586	281	4x7200 Lumen
4	2400	1800	450	610	305	1474	4	586	281	4x7200 Lumen
5	2400	2000	450	610	305	1474	4	586	281	4x7200 Lumen
6	2400	2200	450	610	305	1474	4	586	281	4x7200 Lumen
7	2400	2400	450	610	305	1474	4	586	281	6x10800 Lumen
8	3000	2400	450	610	305	2074	4	586	281	6x10800 Lumen
9	3000	2800	450	610	457	2074	4	586	281	6x10800 Lumen
10	3000	3000	450	610	457	2074	4	586	281	6x10800 Lumen

Project:  
 Tag:  
 Engineer:  
 Contractor:  
 Date:

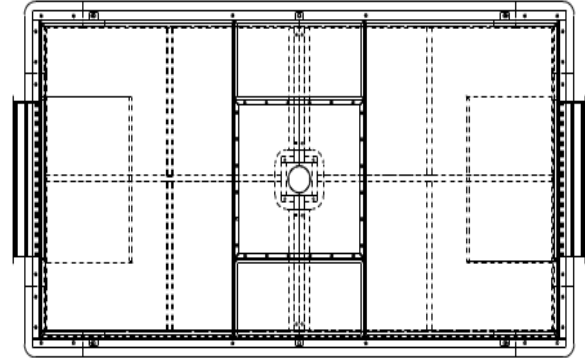
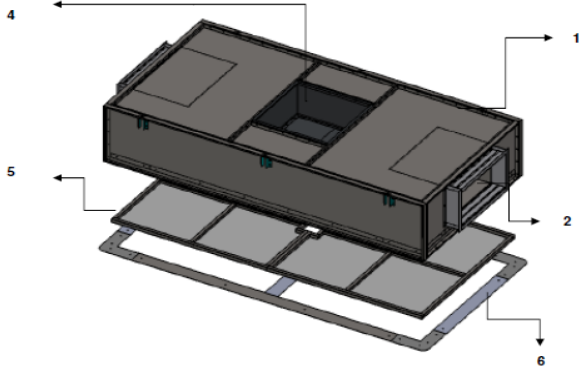


Submittal: GLF

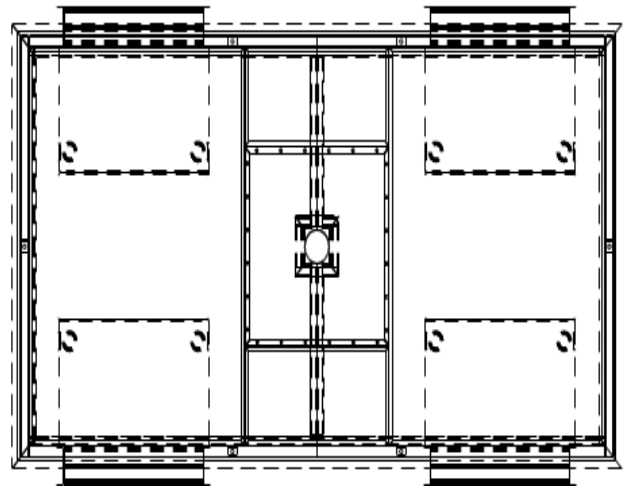
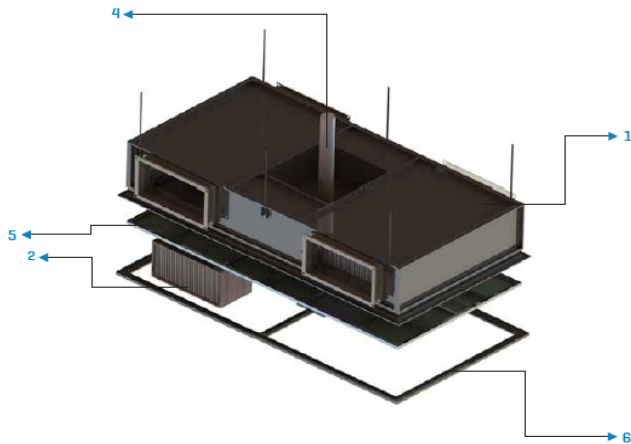
**LAMINAR FLOW UNITS IN OPERATING THEATRES  
 Stainless Steel**

Option: Two Filter Inlet  
 Four Filter Inlet

## Two Filter Inlet



## Four Filter Inlet



- 1 – Main Case
- 2 – H13/H14 Hepa Filter
- 3 – Inner Enlightning
- 4 – Pendant Box
- 5 – Laminiser
- 6 – Frame Parts

Standard Material: 304 Stainless Steel.

Optional: Galvanized Steel Sheet