

## Datasheet

Subject to technical alteration  
Issue date: 02.07.2015



## Application

Differential pressure switch for monitoring the differential pressure of air and other non-flammable and non-aggressive gases.

Possible applications: Monitoring of air filters, fans, industrial cooling air cycles as well as overheating protection, control of air and fire dampers, anti-freeze with heat exchangers.

## Types Available

| Type   | Measuring range |
|--------|-----------------|
| PS200  | 20...200 Pa     |
| PS300  | 30...300 Pa     |
| PS500  | 30...500 Pa     |
| PS600  | 40...600 Pa     |
| PS1500 | 100...1500 Pa   |
| PS4500 | 500...4500 Pa   |

## Security Advice – Caution



The installation and assembly of the device should only be performed by authorized personnel.

The product should only be used for the intended application. Unauthorised modifications are prohibited! The product must not be used in relation with any equipment that in case of failure may threaten, directly or indirectly, human health or life or result in danger to human beings, animals or assets. Ensure all power is disconnected before installing. Do not connect to live/operating equipment.

Please comply with

- Local laws, health & safety regulations, technical standards and regulations
- Condition of the device at the time of installation, to ensure safe installation
- This data sheet and installation manual



## Notes on Disposal

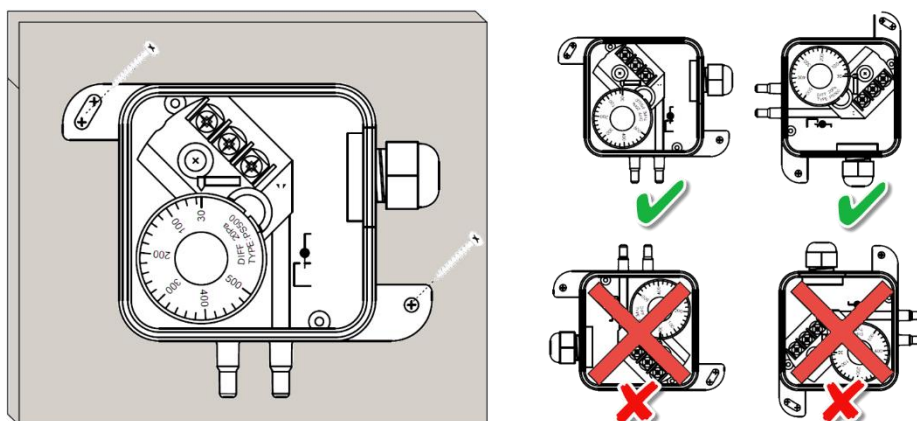
As a component of a large-scale fixed installation, Thermokon products are intended to be used permanently as part of a building or a structure at a pre-defined and dedicated location, hence the Waste Electrical and Electronic Act (WEEE) is not applicable. However, most the product may contain valuable materials that should be recycled and not disposed of as domestic waste. Please note the relevant regulations for local disposal.

## Technical Data

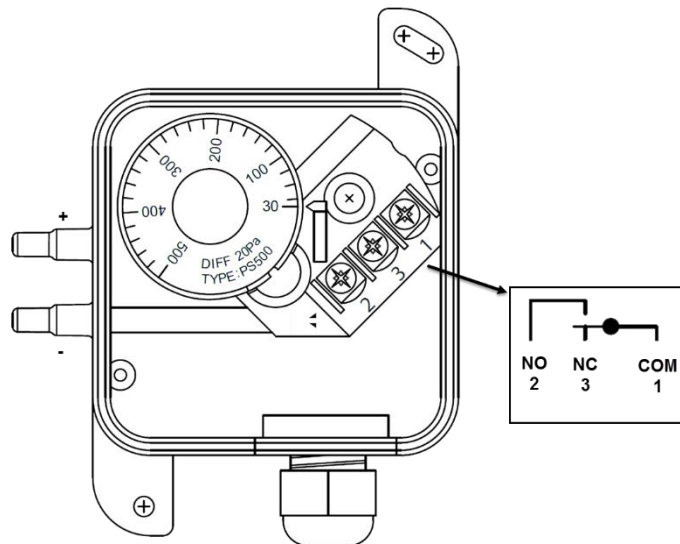
| Measuring values          | Differential pressure  |
|---------------------------|--|
| Medium                    | air, non-aggressive gases, non-flammable gases   |
| Output switch contact     | NO/NC circuit,<br>switching difference<br>PS200   PS300   PS500: 20 Pa,<br>PS600: 30 Pa,<br>PS1500: 80 Pa,<br>PS4500: 180 Pa   |
| Working range temperature | -20..+60 °C  |
| Measuring range pressure  | PS200: 20..200 Pa<br>PS300: 30..300 Pa<br>PS500: 30..500 Pa<br>PS600: 40..600 Pa<br>PS1500: 100..1500 Pa<br>PS4500: 500..4500 Pa   |
| Accuracy pressure         | typ. $\pm 5$ Pa, PS1500 typ. $\pm 10$ Pa, PS4500 typ. $\pm 50$ Pa  |
| Max. working overpressure | 50 kPa   |
| Switching values          | switching load<br>PS200: 0,1 A resistive load,<br>PS300   PS500   PS600   PS1500: 3 A resistive load, 2 A inductive load<br>PS4500: 5 A resistive load, 2 A inductive load<br>max. 250 V ~<br>miniature switches: silver contacts, PS200 gold contacts,<br>service life: >1.000.000 switching operations |
| Enclosure                 | ABS, cover PC, membrane silicone   |
| Protection                | IP54 according to EN 60529   |
| Cable entry               | M16  |
| Connection electrical     | Screw terminal block, max. 1,5 mm <sup>2</sup>   |
| Connection mechanical     | connection pressure: ABS, tube: PVC soft   |
| Ambient conditions        | -40..+85 °C, 0..95% rH non-condensing  |
| Weight                    | 150 g (without accessories)  |
| Shipment                  | 2 fixing screws, 2 plastic duct connectors,<br>2 m PVC-tube soft, $\varnothing=4/7$ mm   |

## Mounting Advices

To be installed flush mounted in vertical position, either the pressure inlets or the electrical cable downwards.



## Connection Plan



When differential pressure increases:

- ➔ 1-3 open
- ➔ 1-2 closed

## Commissioning

1. Open the lid.
2. Select the desired switching point by turning the selection wheel.
3. Route the cables through the strain relief and connect the cables properly to the terminal block.
4. Close the lid.

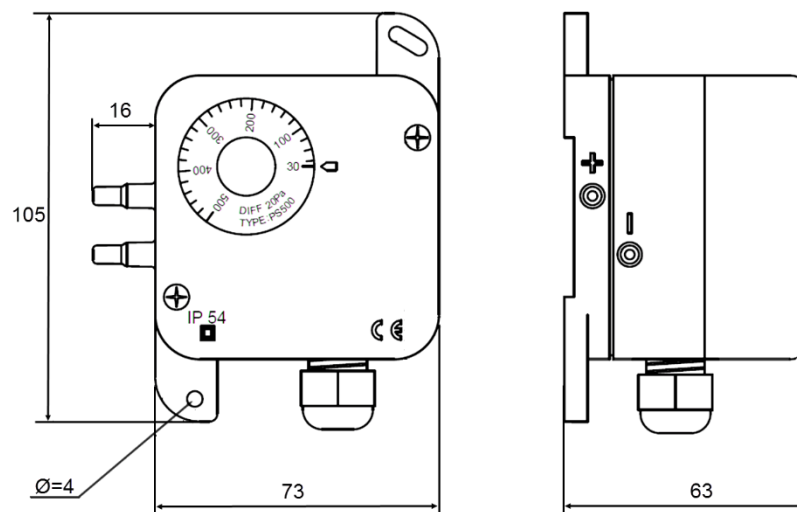


**CAUTION! – Apply power supply only, if the device has been installed correctly!**

Before installing the device, please check the leak tightness of the pressurized connection lines.



## Dimensions (mm)



## Accessories

2 fixing screws  
2 plastic duct connectors  
2 m PVC-tube soft, Ø=4/7 mm

included in delivery  
included in delivery  
included in delivery

Metal duct connectors MKS40 (L=40 mm)  
Metal duct connectors MKS100 (L=100 mm)

Item No. 265138  
Item No. 302531