**DESCRIPTION:**

YDK: In shaft 1049°C - 120 minutes, Out of shaft 1006°C - 90 minutes

The shaft lid protects your electrical and mechanical installations on the structure in a safe and decorative way. In the event of a possible fire, the installation shafts allow the fire to move quickly to the upper zones by making a chimney effect, preventing the use of the installation shaft cover and the fires that occur in the neighborhood to reach the installation sites and fires that may occur in the installation shafts.

MATERIAL:

The fixed outer frame and the moving inner frame are made of aluminum material resistant to bending and buckling. Fire Wicks Graphite, Drywall A1 boardex

APPLICATION:

YDK Series control flaps, the Fire Resistant Shaft Cover provide all the functionality, as well as keeping the fire area at minimum level for 90 minutes and allowing people to escape to safe zones. Smoke and heat are two key elements that cause damage to the fire, and the Shaft Cover does not allow exposure to these elements.

FINISHING:

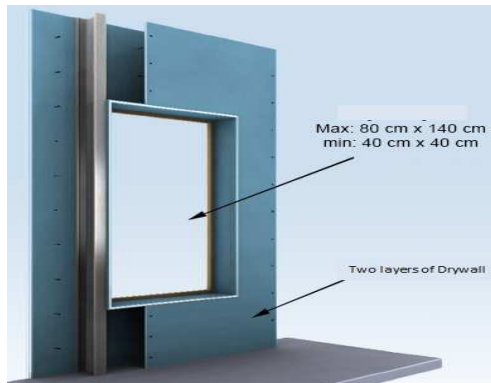
Standard colours are RAL 9010 and RAL 9016 for frame.

INSTALLATION:

The outer frame is applied as a standard by screwing on the gypsum board.



STANDARD SIZES (mm) :

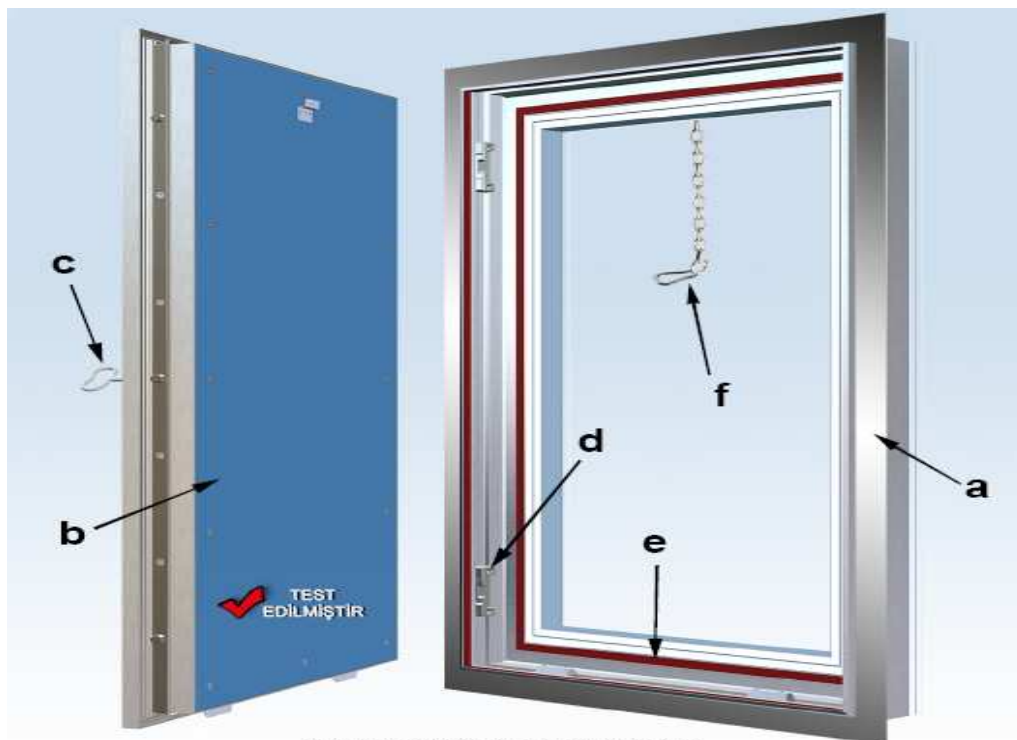


W : 400-450-500-550-600-650-700-750-800 mm

H : 400-450-500-550-600-650-700-750-800-900-1000-1100-1200-1300-1400 mm

* Any combination of these sizes

DRAWINGS:



FIRE RESISTANCE CLASSIFICATION
Opening towards the fire (Cover Nr.1):EI₂90
Opening away from the fire (Cover Nr.2):EI₂120,EI₂120

a – Carrier Frame

b – Moving Frame

c – Lock and Key

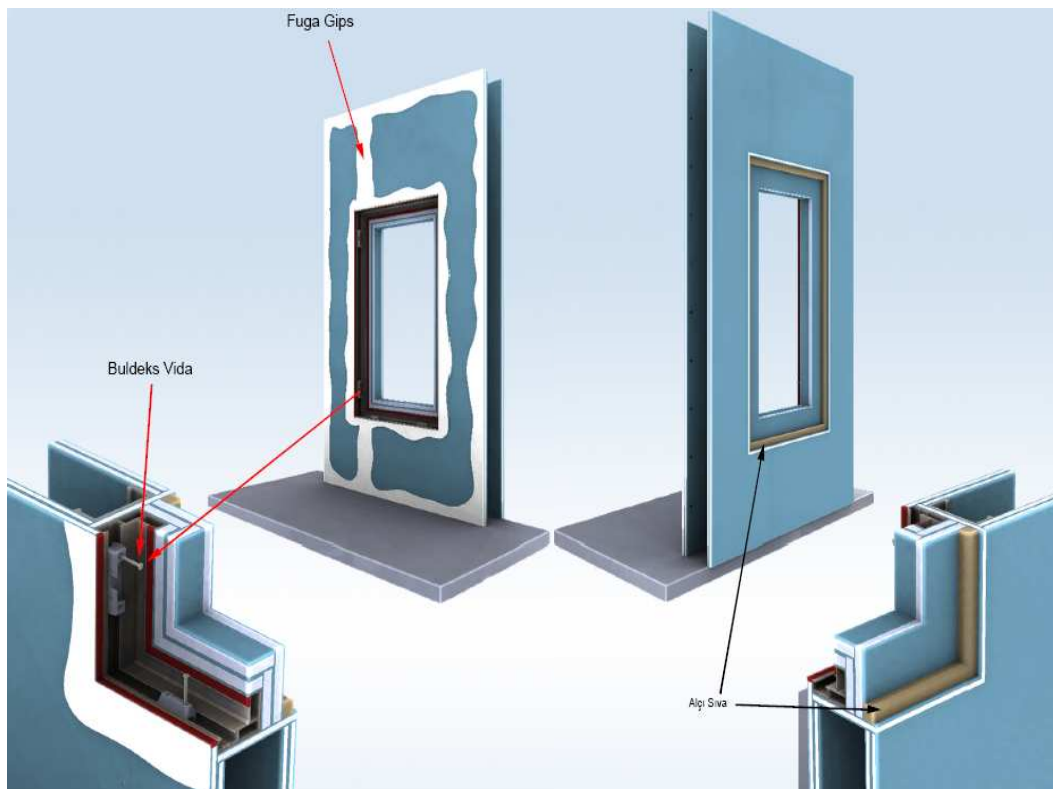
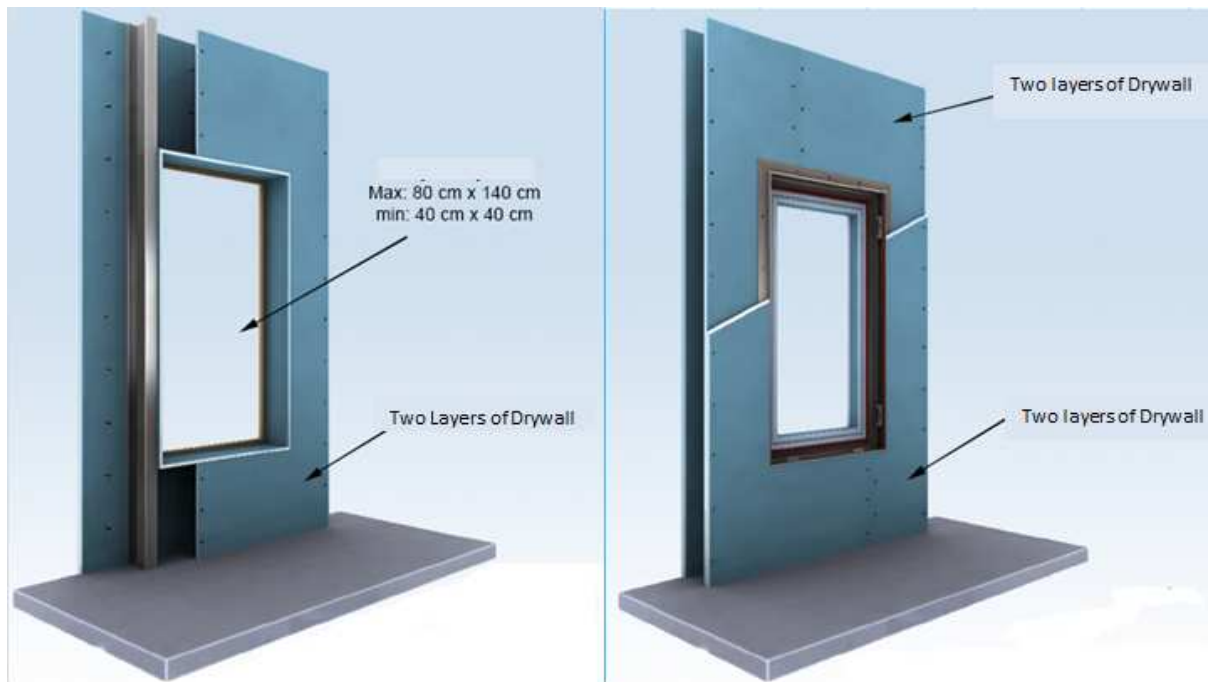
d – Connectors

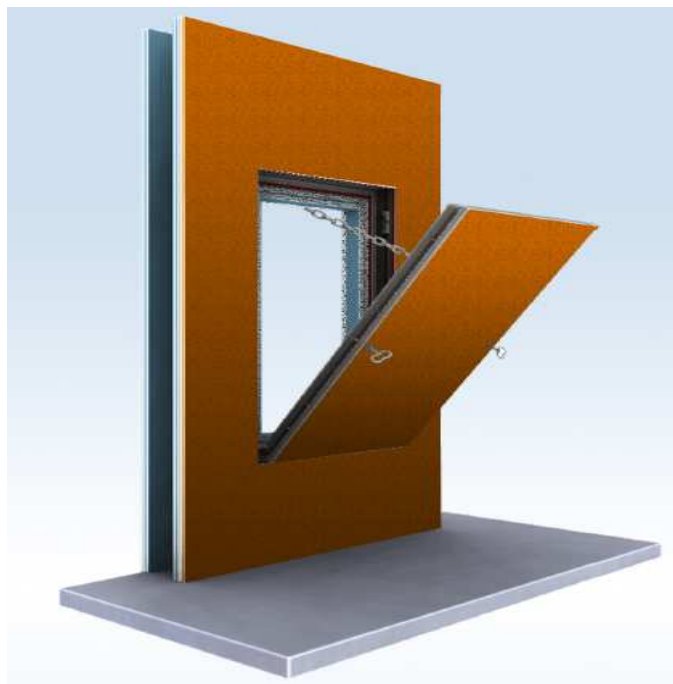
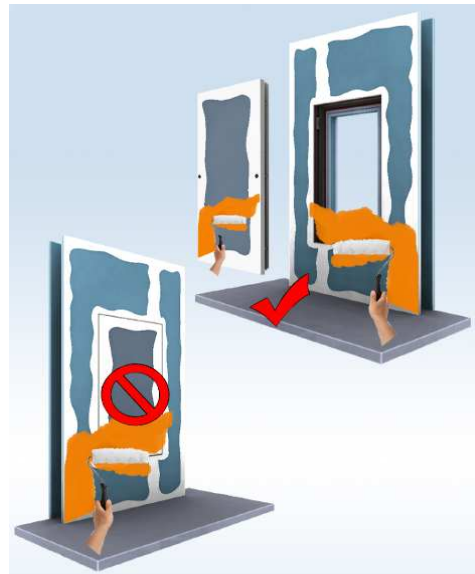
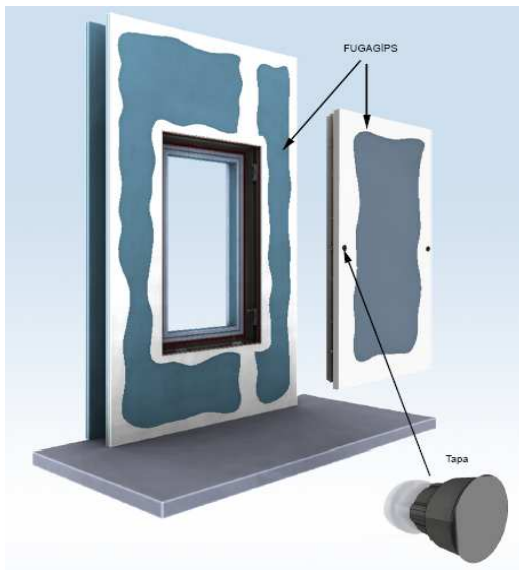
e – Fire Wicks

f – Safety Chain



MOUNTING DETAILS:





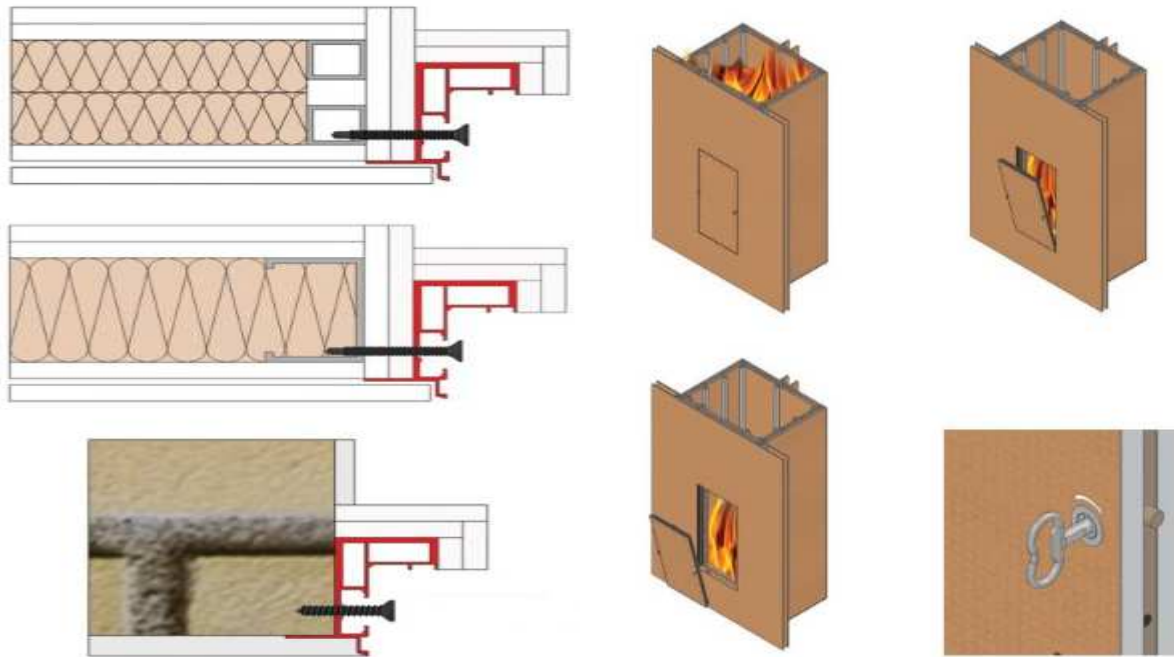
TRIANGLE KEYED



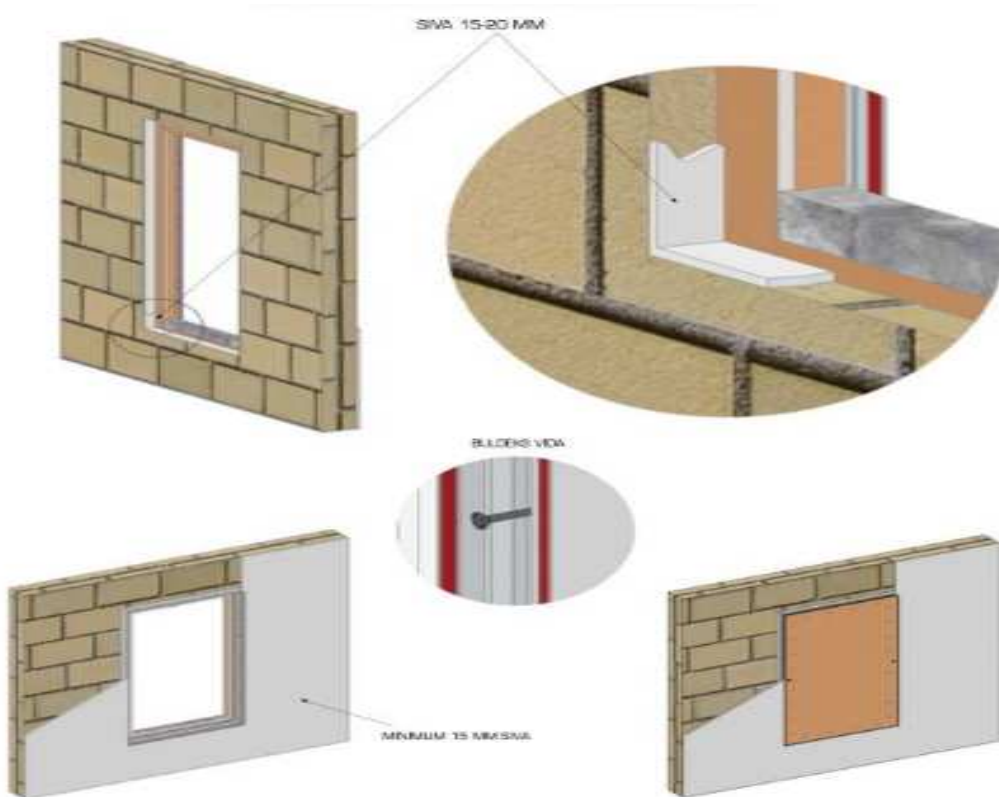
KEYED



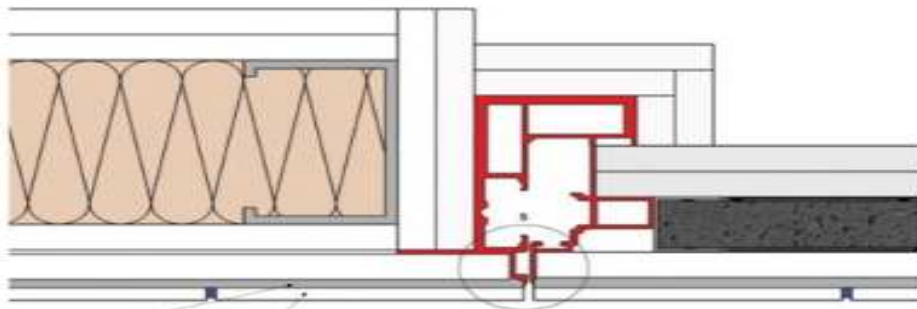
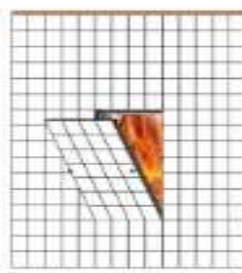
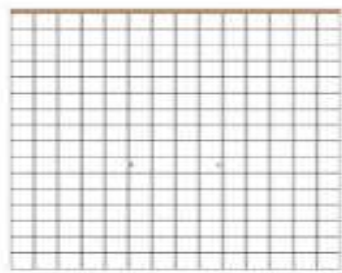
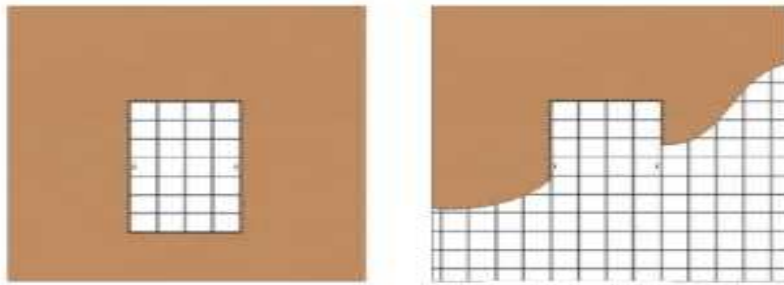
APPLICATION DETAILS IN DIFFERENT WALL TYPES



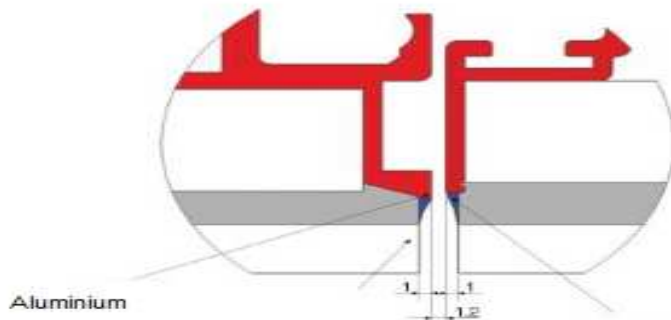
Concrete Wall Application Detail



Ceramic Application Detail



Ceramik Adhesive Keramik



Aluminium

Fuga Filling

**TEST**

Passed the Test Laboratory.



1049C 120 APPEARANCE AFTER MINUTE



* Tüm Ürün Resimleri Tempo İnşaat İzniyle yayınlanmıştır.



ORDER CODE:

YDK	UA	C	D	RAL9010	00	W 400X400
						W: Neck Size C: Frame Size
	UA: Triangle Keyed A: Keyed					00: Without accessories CE : Cover Over Ceramic Coated
		C : Construction Frame KO: without Construction Frame				
			D: Cover Plate drywall Coated E: Cover Plate Egg Creat Coated G: Cover Plate Galvanize sheet Coated			00: without coating RAL----: Powder Coated RAL